

TAYLOR
MICHAEL
SALES & LETTINGS



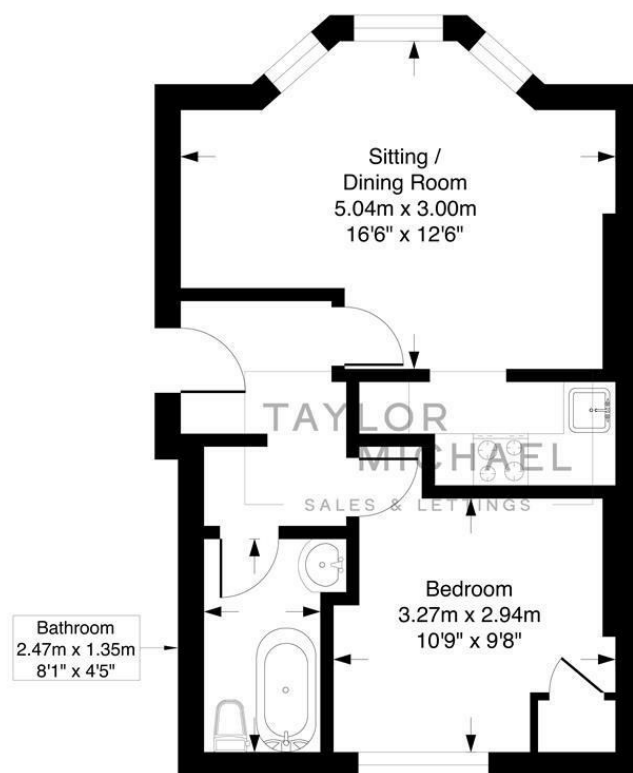
1 Bed
Flat
located in

Offers in excess of
£220,000



TAYLOR
MICHAEL

College Road



Ground Floor
Approximate Floor Area
412.36 sq.ft
(38.31 sq.m)

Illustration for identification purposes only, measurements are approximate, not to scale.

Energy Efficiency Rating		
	Current	Potential
Very energy efficient - lower running costs		
(92 plus) A		
(81-91) B		
(69-80) C	72	79
(55-68) D		
(39-54) E		
(21-38) F		
(1-20) G		
Not energy efficient - higher running costs		
England & Wales	EU Directive 2002/91/EC	

DIRECTIONS

CONTACT

62 Church Road
Hove
East Sussex
BN3 2FP

E: sales@taylormichael.agency
T: 01273 600100
<https://taylormichael.agency/>

TAYLOR
MICHAEL